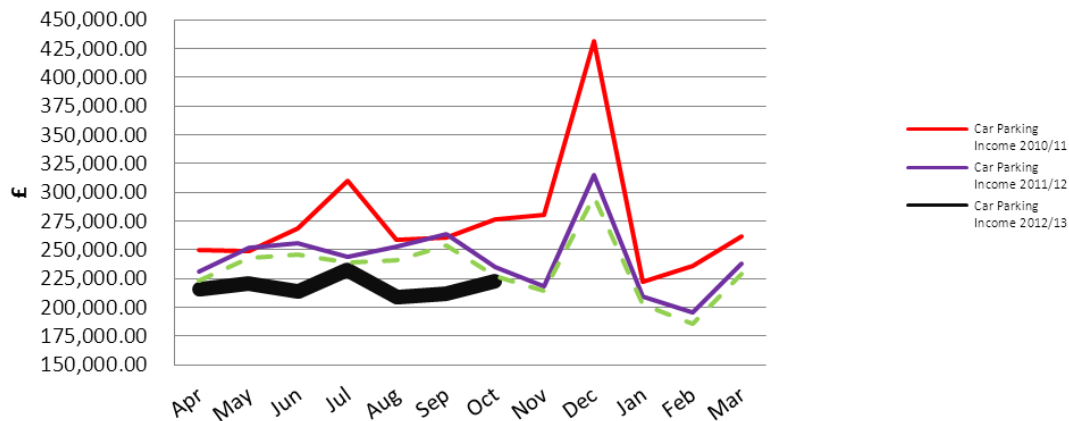
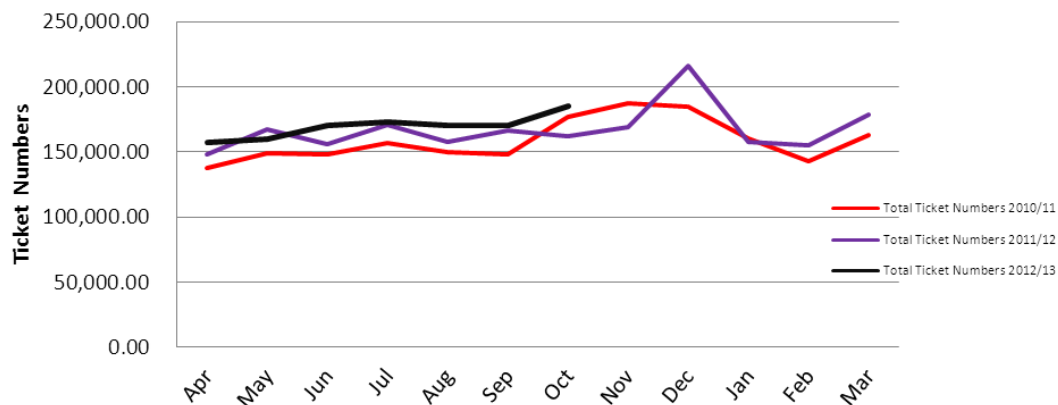


Total Daily Ticket Income 2010/11, 2011/12 and 2012/13



Total Summary Ticket Numbers 2010/11, 2011/12 and 2012/13



Notes:

- The income for the end of period 7 is £147k down against the budget for the first seven months of 2012/13
- The volume of tickets for the year to the end of period 7 is 57k higher than the same period in 2011/12
- St John's Surface Car Park: The closure was effective from 15 June.